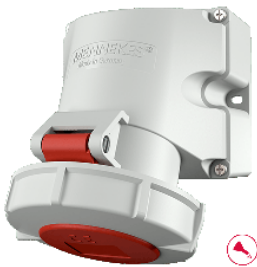


Wall mounted socket  
Part no. 9562



- screw terminals
- highly resistant to chemicals
- highly heat resistant contact carrier
- nickel plated contacts
- two external fixing points
- sockets are designed for adding an auxiliary contact switch
- enclosure base can be turned 180°

Technical specifications

Ampere	32 A
Poles	4 p
Voltage	400-440 V
Clock position	3 h
Hertz	50-60 Hz
Connection technology	Screw terminals
Contact	highly heat resistant contact carrier, nickel plated contacts
Protection type	IP 67
Weight	529 g
Declaration of Conformity	DE,VDE, CN,CQC

Drawing

