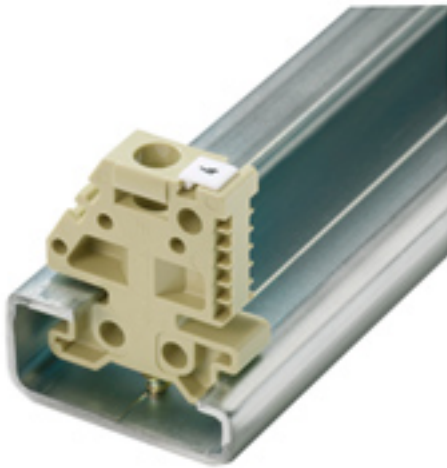


Accessories
EWK 1

Weidmüller Interface GmbH & Co. KG
Klingenbergstraße 16
D-32758 Detmold
Germany
Fon: +49 5231 1429-0
Fax: +49 5231 14292083
www.weidmueller.com

**Klippon® Connect with clamping yoke Technology**

The high reliability and variety of designs of the terminal blocks with clamping yoke connections make planning easier and optimises operational safety. Klippon® Connect provides a proven response to a range of different requirements.

General ordering data

Type	EWK 1
Order No.	0206160000
Version	Accessories, End bracket
GTIN (EAN)	4008190080020
Qty.	50 pc(s).

Accessories EWK 1

Weidmüller Interface GmbH & Co. KG
 Klingenbergstraße 16
 D-32758 Detmold
 Germany
 Fon: +49 5231 1429-0
 Fax: +49 5231 14292083
 www.weidmueller.com

Technical data

Dimensions and weights

Width	9 mm	Width (inches)	0.354 inch
Height	27 mm	Height (inches)	1.063 inch
Depth	31 mm	Depth (inches)	1.22 inch
Net weight	4.34 g		

Temperatures

Continuous operating temp., min.	-50 °C	Continuous operating temp., max.	100 °C
----------------------------------	--------	----------------------------------	--------

Material data

Material	Polyamide 66	Colour	Beige
UL 94 flammability rating	V-2		

System specifications

Version	For the terminals	Mounting rail	TS 32
---------	-------------------	---------------	-------

Additional technical data

Installation advice	Direct mounting	Interlock	for screw fixing
Type of mounting	Screwed		

Dimensions

TS 32 offset	13.5 mm
--------------	---------

Classifications

ETIM 3.0	EC001041	ETIM 4.0	EC001041
ETIM 5.0	EC001041	ETIM 6.0	EC001041
UNSPSC	30-21-18-01	eClass 5.1	27-08-10-03
eClass 6.2	27-08-10-03	eClass 7.1	27-08-10-03
eClass 8.1	27-14-11-35	eClass 9.0	27-14-11-35
eClass 9.1	27-14-11-35		

Product information

Descriptive text accessories	For the WEW 32/1, the hinged tag carrier SchT 15/6 No. 1269060000, with marking labels S 10 and WS 12 can be used.
------------------------------	--

Approvals

ROHS	Conform
------	---------

Downloads

Brochure/Catalogue	CAT 1 TERM 16/17 EN
Engineering Data	EPLAN, WSCAD, Zuken E3.S
Engineering Data	0206160000_04520_EWK_1_TS_32_M4X18_STP.stp 04520_EWK_1_DXF.dxf