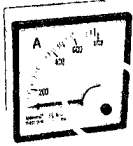
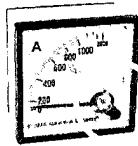


NOTE:

All 96X96, 72X72 with cover on movement available, see below example.

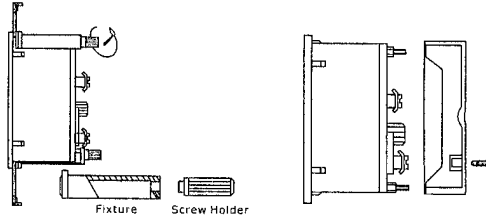


Cover on Movement



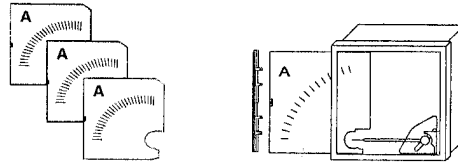
Regular Movement

The meters are adapted to be mounted from the front of panels and then they are equipped with two spring holders, which can be fixed on arbitrary opposite case sides or to be mounted from the rear of panels and then they are equipped with two screw holders which can be fixed on arbitrary, opposite case corners.



CHANGING THE DIAL

Draw out the dial with a suitable tool introduced in the dial perforation. When replacing the new dial, carefully close the slot of the case with the plastic cover. The dial is changeable without influence to accuracy of DT-A96, DT-A72, DT-A48 DE-A96, DE-A72, DT-M96, DT-M72, DT-2M96, DT-AM96, DT-AM72, DG-AA96, DT-A45, see below Demo.



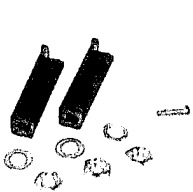
Tips: The dial is changeable without influence to accuracy.



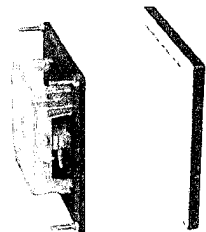
ACCESSORIES DETAILS:

1. - Plastic screw holders..... 2 sets
2. - Brass screw holders (Option)..... 2 sets
3. - Bigger current screw (For Direct input)..... 3 sets
4. - Terminal protection cover..... 1 pc

ACCESSORIES



Larger current screw



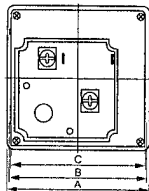
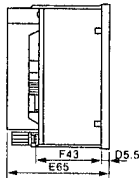
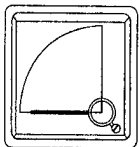
Terminal protection cover



Plastic screw handle



Brass screw handle



Frame Size

Dimension (mm)

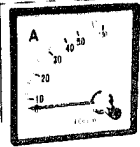
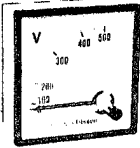
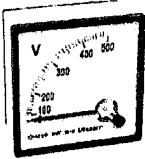
Frame Size	A	B	C	D	E	F
96X96	96	92	90	5.5	65	43
✓ 72X72	72	68	66	5.5	65	43
48X48	48	44	42	5.5	65	43

ANALOGUE PANEL METER

MOVING IRON

• DESCRIPTION

Moving-iron meters are intended for measuring AC current or AC voltage. These meters measure the RMS value and their indications are highly independent of the measured value curve shape.

Ref.	Type	Frame Size(mm)	Mode	Measuring Range	Class Index	Case Qty.(Pcs)	Item Code
	Direct Input AC Ammeter			(2In)			
	DT-DA96	96X96	-	5~100A	1.5	60	1496000
	DT-DA72	72X72	-	5~100A	1.5	100	1472000
	DT-DA48	48X48	-	5~50A	2.5	256	1448000
	DE-DA96	96X96	-	5~100A	1.5	60	1596000
	DE-DA72	72X72	-	5~100A	1.5	100	1572000
	DL-DA72	72X72	-	5~100A	1.5	100	1672000
	CT Operated AC Ammeter			(2In)			
	DT-A96	96X96	x/5A	5~6000A	1.5	60	1960000
	DT-A72	72X72	x/5A	5~6000A	1.5	100	1720000
	DT-A48	48X48	x/5A	5~6000A	2.5	256	1480000
	DE-A96	96X96	x/5A	5~6000A	1.5	60	2960000
	DE-A72	72X72	x/5A	5~6000A	1.5	100	2720000
	DL-A72	72X72	x/5A	5~6000A	1.5	100	3720000
	Direct Input AC Voltmeter			(Vn)			
	DT-V96	96X96	-	100~600V	1.5	60	1196000
	DT-V72	72X72	-	100~600V	1.5	100	1172000
	DT-V48	48X48	-	100~600V	2.5	256	1148000
	DE-V96	96X96	-	100~600V	1.5	60	3496000
	DE-V72	72X72	-	100~600V	1.5	100	3472000
	DL-V72	72X72	-	100~600V	1.5	100	3572000



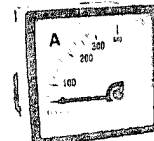
DEMO



Left slot with end stopper



Top cover removable type



DL-A96

Currently, Top cover removable type is available for CT operated AC Ammeter and Direct input Ammeter and Direct input AC Voltmeter.